

# INDEPENDENT INNOVATIVE SOLUTIONS



## OSD-IMT 80 M SD MULTIPURPOSE VESSEL

### PRINCIPAL CHARACTERISTICS

Vessel Type	AHTS, Supply vessel, Standby rescue vessel, Light Construction vessel, Fire Fighting Ship, Tug
L.O.A	80.09 m
L.B.P	75.63 m
Breadth (moulded)	16.50 m
Depth Main Deck	5.50 m
Draught Design	4.30 m
Max Ice Draught	4.00 m
Deadweight	1853 tonnes
BP Ahead	70 tonnes
Speed	13.0 knots
Frame Spacing	600 mm

### CAPACITIES

Fuel Oil	275 m <sup>3</sup>
Cargo Fuel Oil	410 m <sup>3</sup>
Technical Fresh Water	700 m <sup>3</sup>
Fresh Water	150 m <sup>3</sup>
Dry Bulk	130 m <sup>3</sup>
Drill Mud	380 m <sup>3</sup>
Black Water	380 m <sup>3</sup>
Deck Area	550 m <sup>2</sup>

### LSA & FFA EQUIPMENT

Life raft	4x 30 person
FRB	1x
Daughter Craft	1x

### ACCOMMODATION (AIR-CONDITIONED)

Accommodation	34 POB
---------------	--------

### RADIO & NAVIGATION

GMDSS equipment	INMARSAT-C
	Area A-1, A-2, A-3
EPIRB	1x
SART	2x
Radar	2x X-band (48 miles)
Dynamic Positioning	DP 2

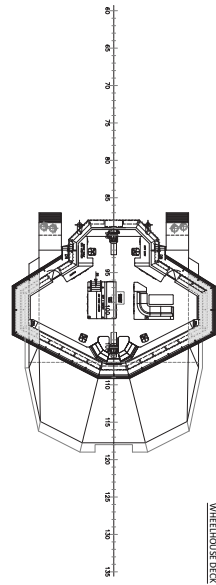
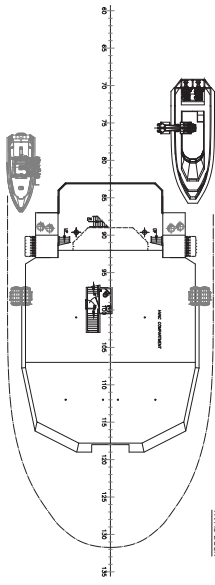
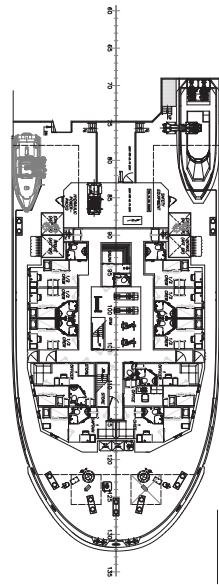
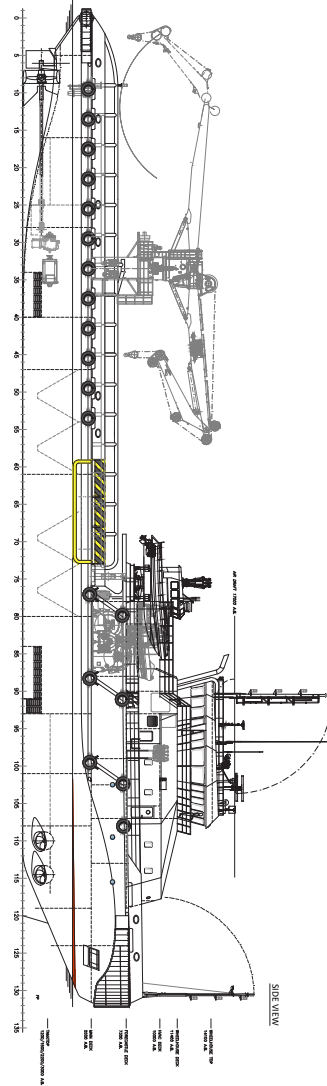
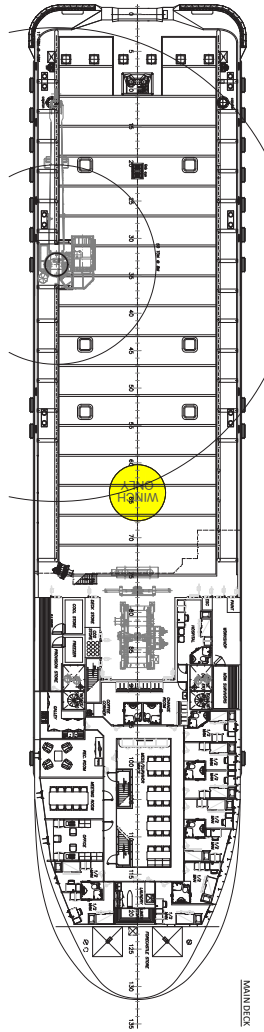
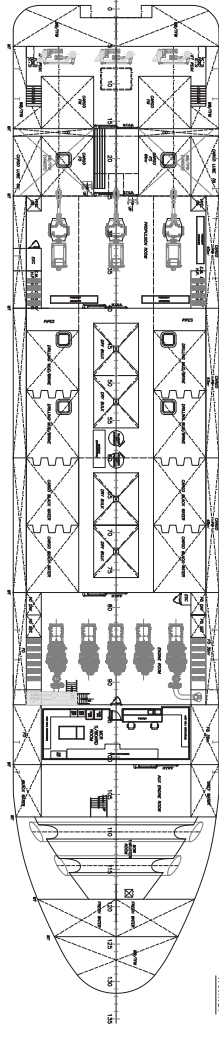
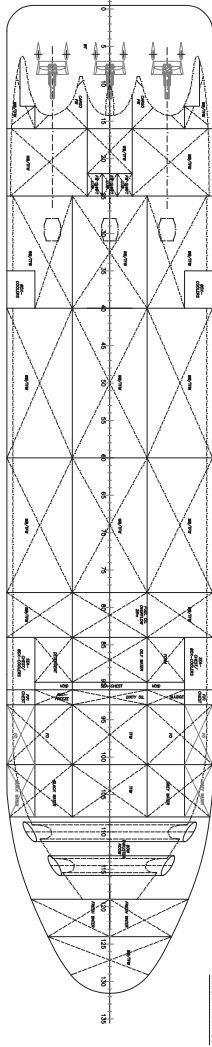
### MACHINERY

Main Engines	5x 994 kW
Propulsion Power	3x 1650 kWe
Propulsion	3x Nozzle 2400 mm FPP
EM Generator Set	200 kWe
Tow Winch	170 tonnes BHP
Stern Roller	1000 mm, 170 ton SWL
Gob Eye	70 ton SWL
Towing Pins + Karm Fork	100 ton SWL
Tugger Winch	2x 10 tonnes
Bow Thruster	2x 8.0 tonnes
Crane	SWL 6 t at 19 m/24 t at 8 m
FiFi-1	2x 1400 m <sup>3</sup> /hr

### CLASS:

I HULL, MACH, SUPPLY VESSEL-OIL PRODUCT FP >60°C – LHNS, ANCHOR HANDLING VESSEL, TUG, STANDBY RESCUE VESSEL, FIRE FIGHTING I –WATERSPRAY, OIL RECOVERY SHIP – SECOND LINE, SP34, AUT-UMS, ICE CLASS 1A, DYNAPOS AM/ AT R, UNRESTRICTED NAVIGATION, INWATERSURVEY

# OSD-IMT 80 M SD MULTIPURPOSE VESSEL



## HEAD OFFICE IJMUIDEN

+31 255 545 070

info@osd-imt.com

## UK OFFICES

+44 1382 317 120

info@osd-imt.com

## SINGAPORE OFFICE

+65 6265 1154

info@osd-imt.com



SHIP DESIGN & MARINE CONSULTANCY

OSD-IMT.com