

# INDEPENDENT INNOVATIVE SOLUTIONS



## OSD-IMT955L STANDBY SAFETY VESSEL

### GENERAL INFORMATION

|                   |                             |
|-------------------|-----------------------------|
| Vessel Type       | Standby Safety Vessel       |
| Class             | Lloyds + 100 A1, + LMC, UMS |
| L.O.A             | 60.20 m                     |
| L.B.P             | 52.80 m                     |
| Beam              | 12.70 m                     |
| Rescue Draft      | 4.00 m                      |
| Summer Load Draft | 4.66 m                      |
| Deadweight        | 1000 tonnes                 |
| Gross Tonnage     | 1536 GT                     |
| Net Tonnage       | 461 NT                      |

### CAPACITIES

|                       |                                     |
|-----------------------|-------------------------------------|
| Total Deck Area       | 250 m <sup>2</sup>                  |
| Deck Cargo            | 325 tonnes                          |
| Fuel Oil (Ship)       | 174 m <sup>3</sup>                  |
| Fuel Oil (Cargo)      | 428 m <sup>3</sup>                  |
| Potable Water (Ship)  | 140 m <sup>3</sup>                  |
| Potable Water (Cargo) | 442 m <sup>3</sup>                  |
| Cargo FO Pumps        | 1 x 75 m <sup>3</sup> /hr @ 100 mlc |
| Cargo PW Pumps        | 1 x 75 m <sup>3</sup> /hr @ 100 mlc |

### ACCOMMODATION

|               |  |
|---------------|--|
| Cabins        | 15 en-suite single cabins,<br>7 fitted with Pullman Berths                     |
| Accommodation | Ships Office, Mess room,<br>Recreation Room, Smoking<br>Room, Gymnasium, Sauna |

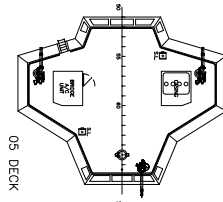
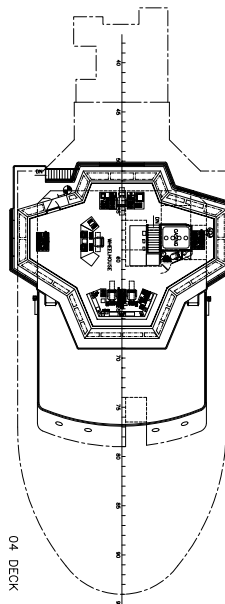
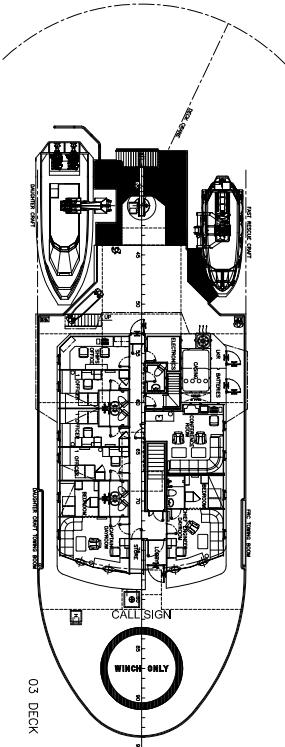
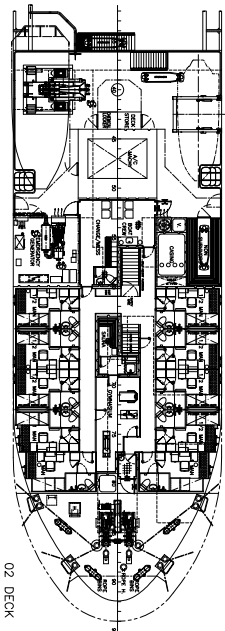
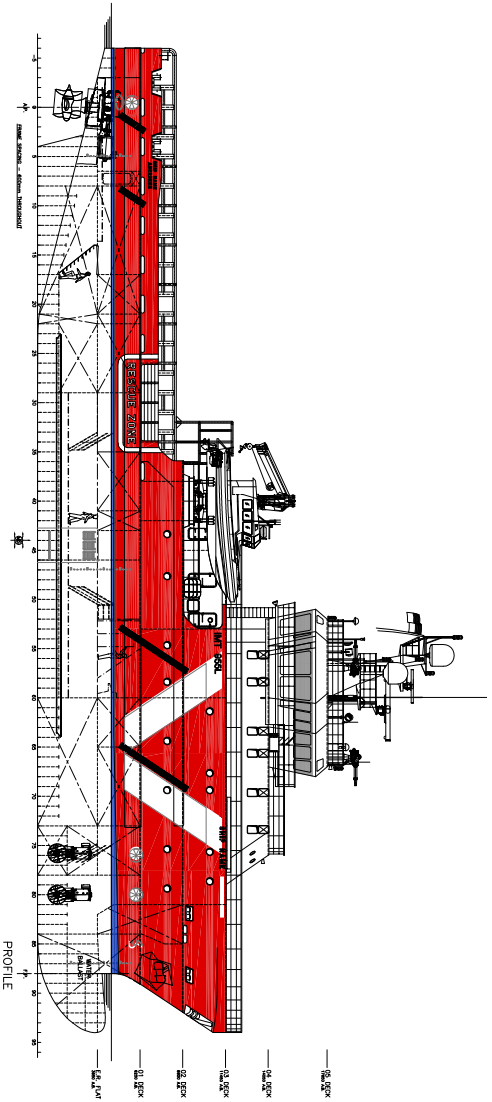
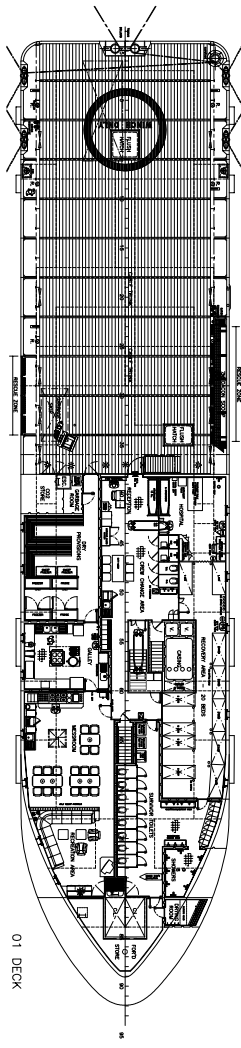
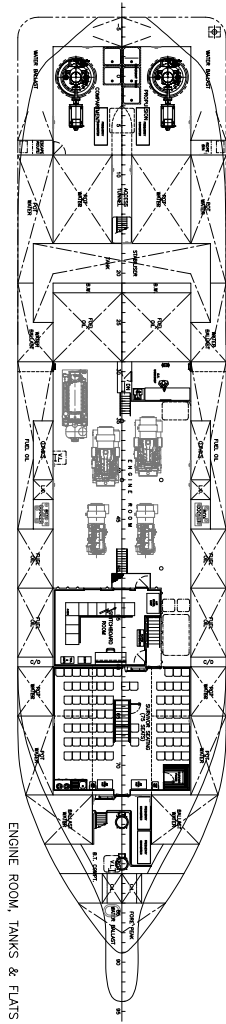
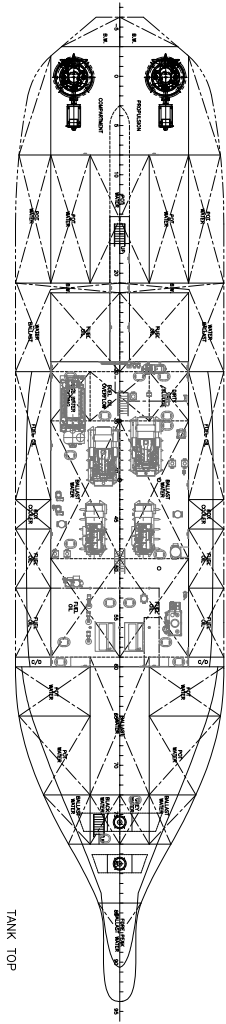
### PROPULSION CONFIGURATION

|                  |                             |
|------------------|-----------------------------|
| Generators       | 4x 550 kW 440v/3/60         |
| DE System        | SES Active Front End        |
| Main Propulsion  | 2x 850 kW Azimuth Thrusters |
| Bow Thruster     | 2x 450 kW Tunnel            |
| Service speed    | 12.5 knots                  |
| Economical Speed | 11.0 knots                  |
| Manoeuvrability  | Joystick (3 positions)      |

### EMERGENCY RESPONSE CAPABILITIES

|                       |   |
|-----------------------|---|
| Rescue Craft          | 1x 6.5 m, 15 man FRC                                |
|                       | 1x 10.0 m Daughter Craft                            |
| Mechanical Aids       | 1x 7 m Dacon Scoop                                  |
| Crane                 | 1x Knuckle Boom Crane SWL<br>4.0/1.5 t @ 4.0/12.3 m |
| Temporary Refuge      | 1x Rescue Basket                                    |
| Dispersant Capacity   | 5x 1 m <sup>3</sup> Plastic Tanks                   |
| Towing Facilities     | Cruciform Bollard at Transom                        |
| Rescue Zones          | 1x 5 m Scrambling Nets(stbd)                        |
|                       | 1x 7 m Dacon Scoop (port).                          |
| Self-Drenching System | 5 ltrs/m <sup>2</sup> /min                          |
| Winching Zones        | 1x Aft Deck   |
|                       | 1x Focsls Deck                                      |
| Survivor Capability   | UK Group B - 300 Survivors                          |
|                       | Norway - 260 Survivors                              |
|                       | Denmark - 140 Survivors                             |
|                       | Netherlands - 120 Survivors                         |

# OSD-IMT955L STANDBY SAFETY VESSEL



## HEAD OFFICE HOOFDDORP

+31 255 545 070

info@osd-imt.com

## UK OFFICES

+44 1382 317 120

info@osd-imt.com

## SINGAPORE OFFICE

+65 6265 1154

info@osd-imt.com

**OSD IMT**

SHIP DESIGN & MARINE CONSULTANCY

OSD-IMT.com