

INDEPENDENT INNOVATIVE SOLUTIONS



OSD-IMT6008 MULTI-PURPOSE BULK CARRIER/CONTAINER FREIGHTER

PRINCIPAL CHARACTERISTICS

Vessel type	Limited draft vessel for transport of general cargo (bulk, steel coils, forest products, etc) and containers in hold, over deck and over hold hatch covers
LOA	92.8 m
Beam mld.	23.0 m
Depth mld.	6.50 m
DWT @ draft	5200 t @ 4.25 m/6770 t @ 5.00 m
Speed @ draft	10.5 kn @ 4.25 m (85% MCR)

DIESEL - PROPULSION CONFIGURATION

Main engines	2x	1250 bKW @ 900 rpm MDO
Gearbox	2x	reduction and inversion, mounted LO and FW pumps
Propellers	2x	2850 mm FPP
Main Generators	3x	400 eKW 380 v 50 Hz
Emergency/Harbor	1x	150 eKW 380 v 50 Hz
Shore supply	1x	230 V/400 V, 125 A, 50 m cable
Rudder	2x	fishtail
Bow Thruster	1x	450 kW electric
Refrigeration	2x	Side boxcoolers, engine mounted circulation pumps

DECK MACHINERY

Windlass(es)	2x	Electric-hydr anchor chain lifter, 1x mooring rope single drum and 1x warping head
Winch(es)	2x	Electric-hydraulic mooring rope single drum and one warping head
Crane	1x	Electric-hydraulic telescopic, provisions/spares crane with electric winch - 2 t/16 m
Hatches	2x	Articulated folding type
Lifesaving	2x	Lifeboats and 3x Life rafts

CONTAINERS

In hold	72	TEU
On deck	158	TEU
Total	230	TEU

SECONDARY SHIP SYSTEMS

Radio communications	GMDSS A1, A2 and A3
Compressed air	2x compressors + 2x start bottle
Separators	2x OF, 1x LO, bilge acc Marpol
Pumps	2x GS, 1x EmgFire, 1x BW, 2x OF, 2x hydrophores, 1x sludge, 1x dirty oil, 1x neumatic bilge
Ventillation	HVAC deckhouse independent, HVAC backup bridge, 6 changes/hour forced ventilation in hold
Others aux mach	3x ejectors, 1x sewage treatment plant, 1x RevOsmosisFW, 1x working air compressor and bottle, etc.

ACCOMMODATION

Complement	18	prsons
Captain/Chieff/Owner	3	single lux, ensuit
Senior officer/Visitor	4	single big, ensuit
Rating	11	single med, ensuit
Changeroom, Laundry, Provision rooms, Galley, Messroom, Lounges, Smoking room, Offices, Sickbay, etc.		

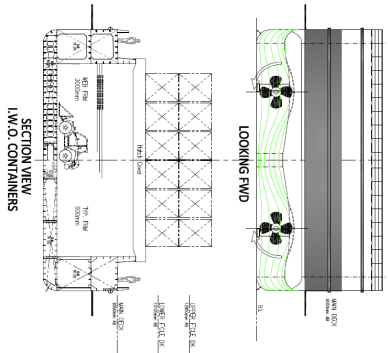
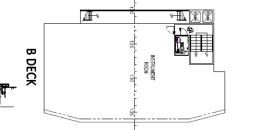
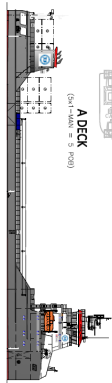
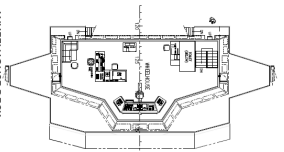
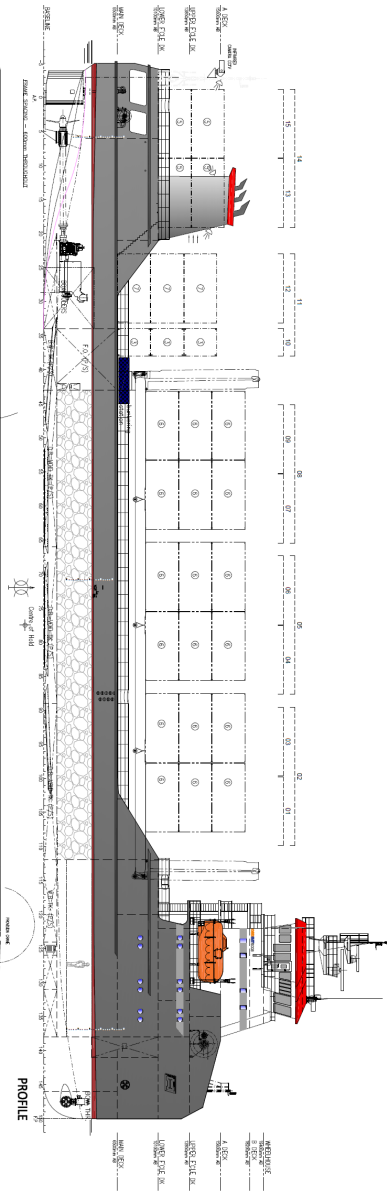
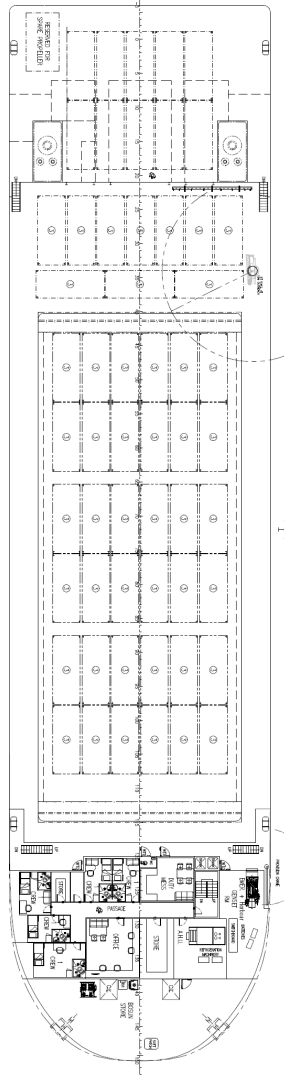
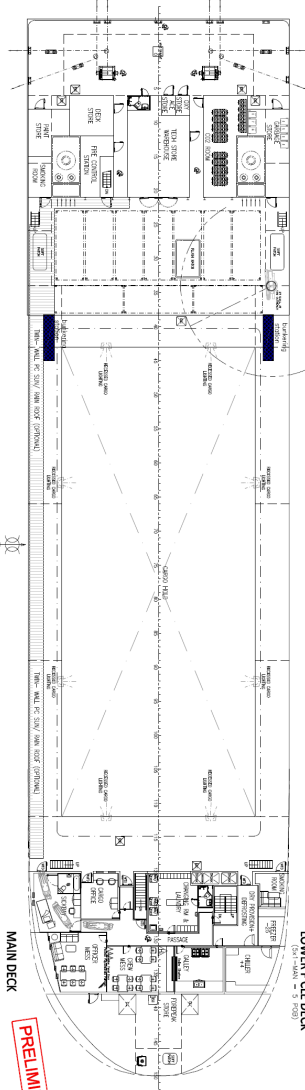
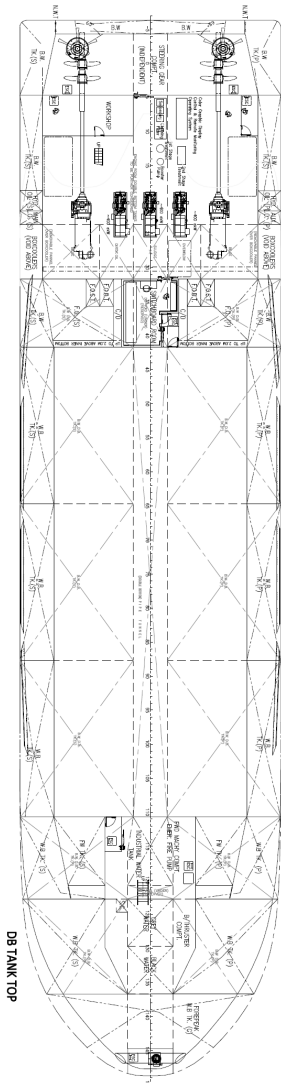
CAPACITIES

Cargo Hold	4900 m ³
Ballast water	4600 m ³
Ships Oil Fuel	280 m ³
Fresh Water	235 m ³
Lub oil/Hyd oil	35 m ³
Miscelaneous	160 m ³
Cargo Deck Area	380 m ³

CLASS

LR: +100A1 bulk carrier, strengthened for heavy cargoes, ESP, Container Cargoes on Upper Deck and on all Hatch Covers, ShipRight ACS(B,D), *IWS, LI, ECO, +LMC, with the descriptive note "Strengthened for Regular Discharge by Grabs 30), ShipRight (SCM, IHM)"

OSD-IMT6008 MULTI-PURPOSE BULK CARRIER/CONTAINER FREIGHTER



HEAD OFFICE HOOFDDORP

+31 255 545 070

info@osd-imt.com

UK OFFICES

+44 1382 317 120

info@osd-imt.com

SINGAPORE OFFICE

+65 6265 1154

info@osd-imt.com

OSD IMT

SHIP DESIGN & MARINE CONSULTANCY

OSD-IMT.com