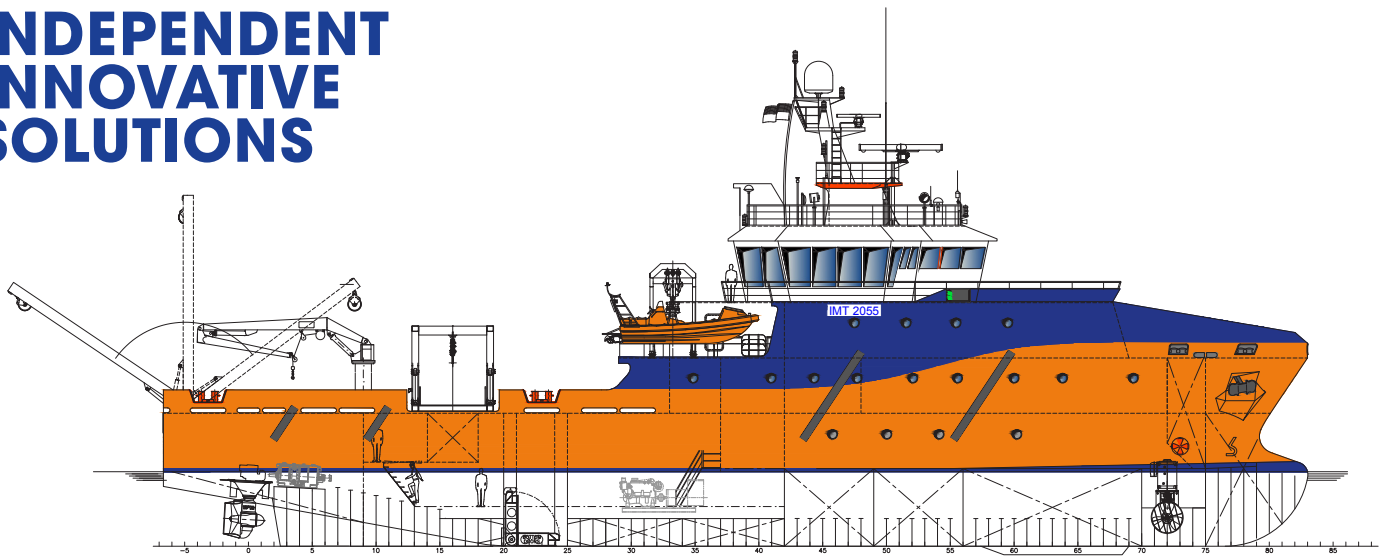


# INDEPENDENT INNOVATIVE SOLUTIONS



## OSD-IMT2055 SURVEY VESSEL

### GENERAL INFORMATION

Vessel Type	Survey Vessel
Class	"Survey Vessel"
	MC AUT, DP1
LOA	55.5 m
LBP	47.4 m
Beam	13.5 m
Depth	6.25 m
Design Draft	
(Incl Keel Pod)	3.5 m
Gross Tonnage	1450 tonnes approximately
Net Tonnage	T.B.C.

### CAPACITIES

Clear Deck Area	260 m <sup>2</sup> (Gross)
Ships Fuel Oil	260 m <sup>2</sup> at 98%
Fresh Water	180 m <sup>2</sup> at 100%
F.W maker	7 tonnes/day

### ACCOMMODATION

Complement	34 Maximum
Cabins	10x Single, 12x Double
Accommodation	Mess room, Lounge, Gym Quiet Lounge, Hospital.

### WORKING SPACES

Working Spaces	Online survey room, Offline survey Room Survey Office
----------------	---

### DECK MACHINERY

Deck Crane	1x SWL 3.5 tonnes @ 13.7
Store Crane	1x SWL 0.8 tonnes @ 12.4
Hydraulic A Frame	1x SWL 10 tonnes (stern)
Hydraulic A Frame	1x SWL 10 tonnes (starboard side)

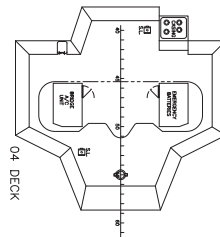
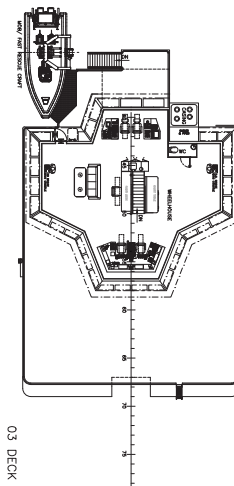
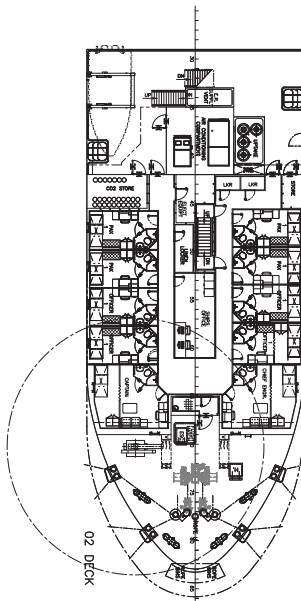
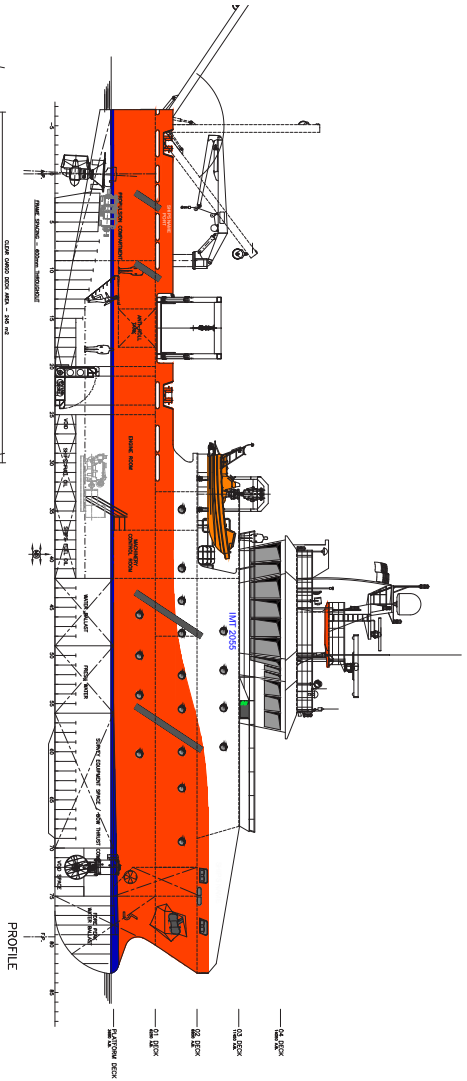
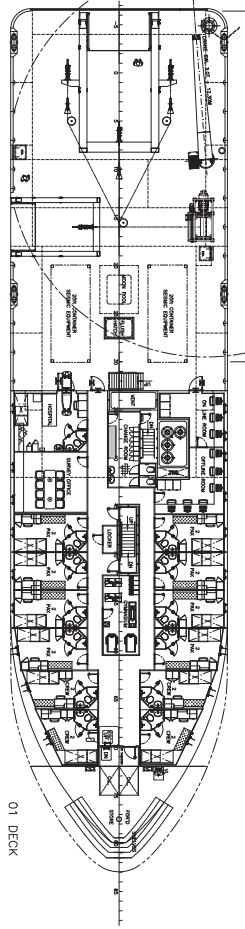
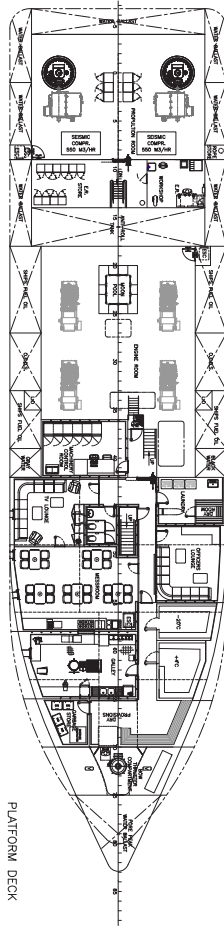
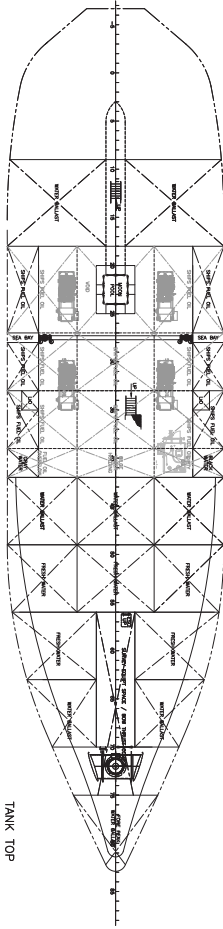
### SURVEY EQUIPMENT

DGPS Positioning	Starfix G2 / Starfix HP Starfix Xp / Spot Services
Acoustic Positioning	Kongsberg HiPAP 501
Motion Reference unit	Applanix POS MV 320E
Echo Sounder	Kongsberg EA 600
Multi beam Echo sounder	Kongsberg EM 2040
Sound Velocity @Head	Valeport UltraSV
Sound Velocity Probe	AML Oceanographic Plus X
Side Scan Sonar	Edgetech 4200
Sub-bottom Profiler	Edgetech 3300-HM 5x5 Array
Digital Recording	Glog
Magnetometer	Geometrics G-882
Seabed Sampling	3/6m Gravity/Vibro Corer Grab Sampling
Compressors	2x 275m <sup>3</sup>
Geotechnical capability	CPT and Vibro coring
Environmental capability	Day / Van Veen Grabs Stills & Video Camera Box Corer
Work Boat	8.6mx3.0m

### DIESEL ELECTRIC PROPULSION CONFIGURATION

Main Generator Sets	4x 450 kW @ 1000 rpm
Propulsion Motor	2x 500 kW Electric Motor
Steerable Azimuth Units	2x FP/Nozzles
Emergency Generator	N.A (Batteries)
Bow Thruster	1x 200 kW
Operating Range	8750 nm @ 10 kts
Trial Speed	11.0 kts

# OSD-IMT2055 SURVEY VESSEL



## HEAD OFFICE HOOFDDORP

+31 255 545 070

info@osd-imt.com

## UK OFFICES

+44 1382 317 120

info@osd-imt.com

## SINGAPORE OFFICE

+65 6265 1154

info@osd-imt.com



SHIP DESIGN & MARINE CONSULTANCY

OSD-IMT.com