

INDEPENDENT INNOVATIVE SOLUTIONS



OSD-IMT IMT7001 MULTI-PURPOSE UTILITY VESSEL

PRINCIPAL CHARACTERISTICS

Vessel Type:	M.O.T.T
Class:	BV
LOA:	49.98 m
LBP:	42.35 m
Beam:	15.0 m
Depth:	6.2 m
Design Draught:	5.0 m

CAPACITIES

Clear Deck Area:	220 m ²
Ships Fuel Oil:	575 m ³ at 98%
Cargo Fuel Oil:	100 m ³ at 98%
Fresh Water:	260 m ³ at 100%
Recovered Oil:	100 m ³ at 98%
Drill Water:	330 m ³

ACCOMMODATION

Complement:	22 Persons
Cabins:	4 x Single, 9 x Double
Accommodation:	Mess room, Lounge, Smoking Lounge, Gym, Laundry, Galley, Office

DIESEL ELECTRIC PROPULSION CONFIGURATION

Main Engines:	2 x 2353 kW @ 750 rpm
Generator Sets:	3 x 450 kW @ 1800 rpm
Propeller:	2.70 m, 4 blades
Azimuthing Units:	2 x 2353 kW
Emergency Generator:	1 x 165 kW @ 1500 rpm
Bow Thruster:	1 x 350 kW @ 1450 rpm
Trial Speed:	13.0 kts @ 4.5m Draught
Bollard Pull:	80 tonnes

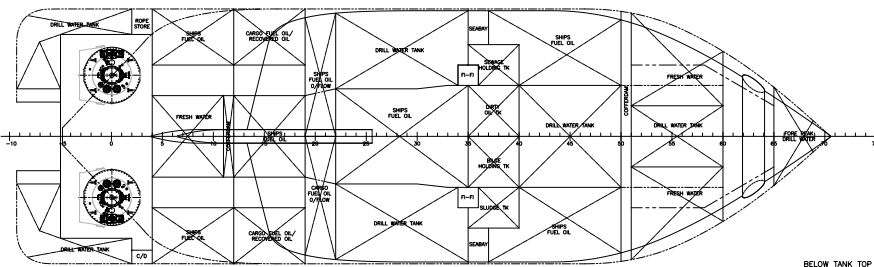
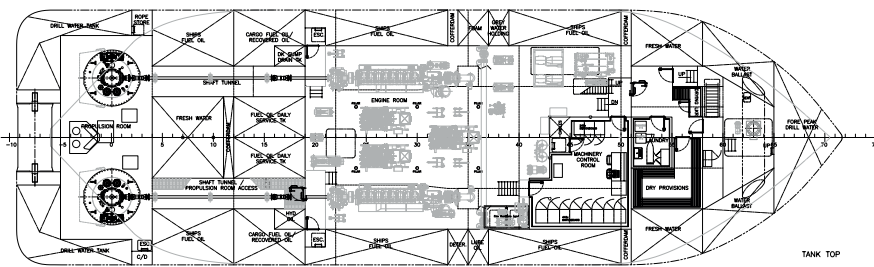
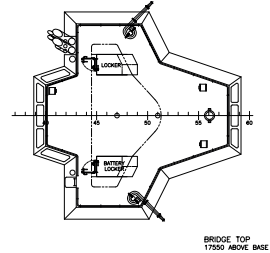
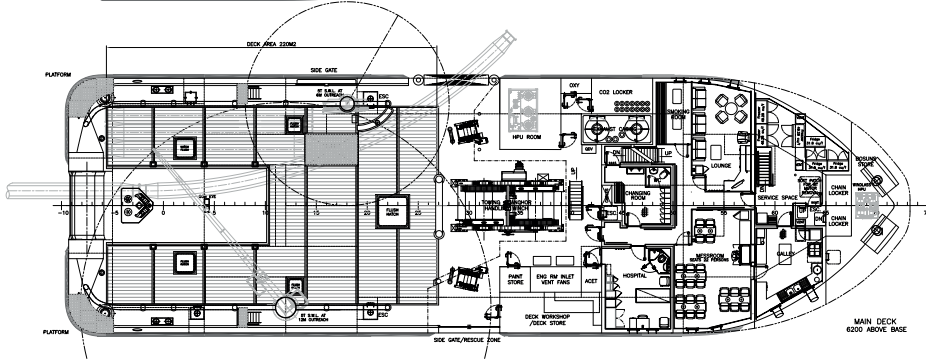
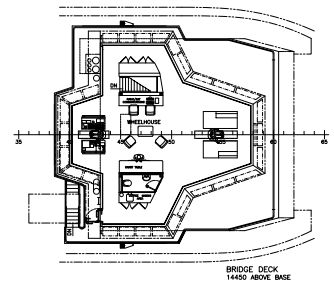
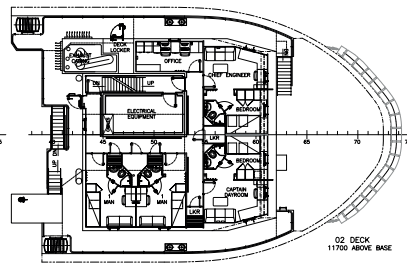
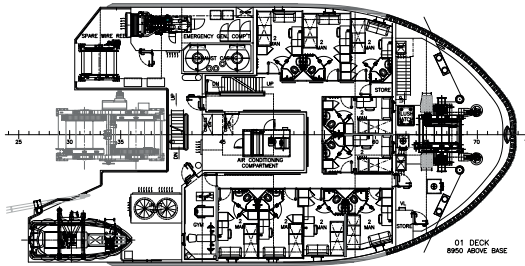
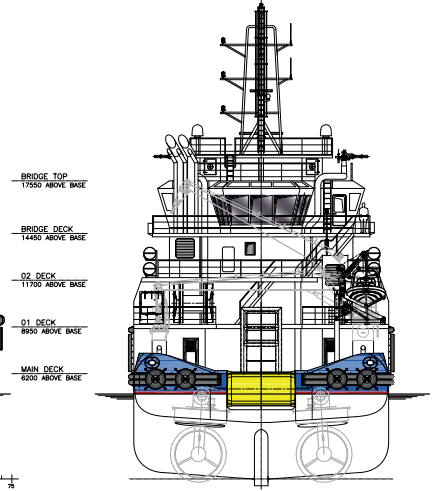
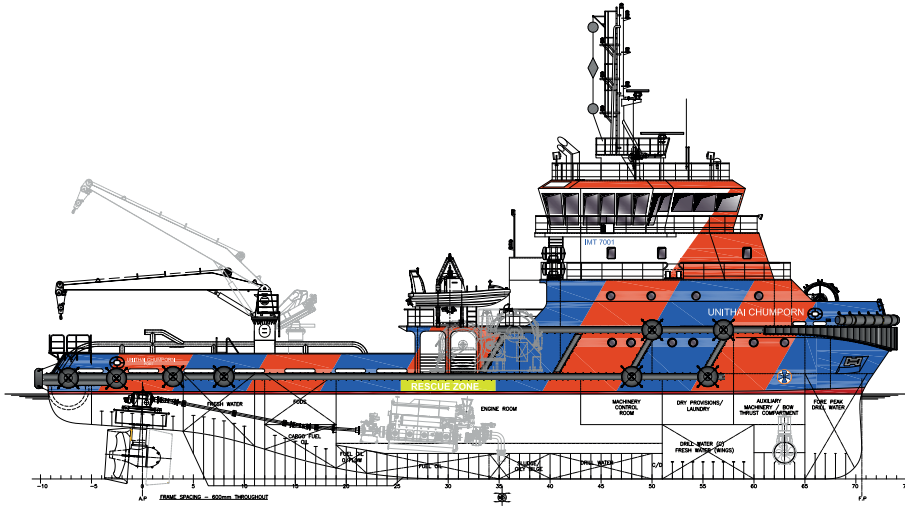
DECK EQUIPMENT

Capstan:	2 x 5 tonnes SWL @12m/min
Tugger Winch:	2 x 10 tonnes SWL @15m/min
Anchor Handling Winch:	Towing Drum – 150t Pull
Brake holding:	225 tonnes with 1200m x 54mm SWR
Bow Towing Winch:	30 tonnes Pull @ 9m/min 5 tonnes Pull @ 30m/min
Brake holding:	220 tonnes
Fixed Boom Crane:	5 tonnes at 12m Radius Stbd side
Knuckle Boom Crane:	5 tonnes at 6m Radius Port side
Fire Fighting System:	Class 1 Fire Fighting

CARGO PUMPS

Fuel Oil:	1 x 60 m ³ /hr @ 9 bar
-----------	-----------------------------------

OSD-IMT IMT7001 MULTI-PURPOSE UTILITY VESSEL



HEAD OFFICE IJMUIDEN

+31 255 545 070

info@osd-imt.com

UK OFFICES

+44 1382 317 120

info@osd-imt.com

SINGAPORE OFFICE

+65 6265 1154

info@osd-imt.com



SHIP DESIGN & MARINE CONSULTANCY

OSD-IMT.com